

City Church

411

Luther Stanford, Lead Pastor

Sunday Worship at 9:00 & 10:45 a.m.

CONTACT US: 850-785-6137

info@citychurchpc.com

www.citychurchpc.com

   @citychurchpc

530 Airport Rd. - Main Campus
756 Airport Rd. - Annex
Panama City, FL, 32405

Current Sermon Series



My Mission:
The Gospel

CityKids

We are growing
and need your help!

Our Most Pressing Needs:

- K-5, Small Group Co-Leader
- Buddies/Encouragers
- Nursery
- Pre-K Small Group Co-Leader
- 911...Fill-In Team

If you are interested in helping in any capacity within our CityKids Ministry, please speak with Austin Rhodes or email him at:

arhodes@citychurchpc.com

What's coming up...

FRIDAY, NOV. 19 – ONE SERVICE & DINNER ON THE GROUNDS, join us as we celebrate a City Church Family Thanksgiving Sunday! We will have a single worship service beginning at 10 a.m. No Adult Groups, Students or Kids activities that morning, but there will be PreK & Nursery available! Following worship we will gather for a dinner on the grounds at the Annex. Please bring your favorite Thanksgiving dish or dessert!

EVERY TUESDAY – ZUMBA, 6 p.m. in the Fellowship Hall. It's so much fun...and it's free!

EVERY SUNDAY – YES, YOU CAN! SEWING MINISTRY, 4 p.m. in the Fellowship Hall. You will need to provide your own machine. For more info, please email us at info@citychurchpc.com!

~~~~~

## City Church Fall & Christmas Calendar

### NOVEMBER

- 13-20...National Operation Christmas Child Collection Week
- 15...Kids/Students Friendsgiving Dinner
- 19...One Worship Service at 10 a.m. followed by a City Church Family Dinner on the Grounds
- 22...No Midweek Activities
- 23...Thanksgiving
- 26...Launch for Christmas Family Advent Box

### DECEMBER

- All Month...H.U.G.S. Collection
- 6...Christmas Outdoor Movie Night
- 13...Christmas Serve Night
- 20...Java at the Stanfords (located at 158 Candlewick Circle)
- 24...Christmas Eve Services at 9 & 10:45 a.m
- 31...New Year's Family Worship at 10. a.m.

**More information on these events coming soon!**



## Midweek is every Wednesday

from 5:30 to 7:30

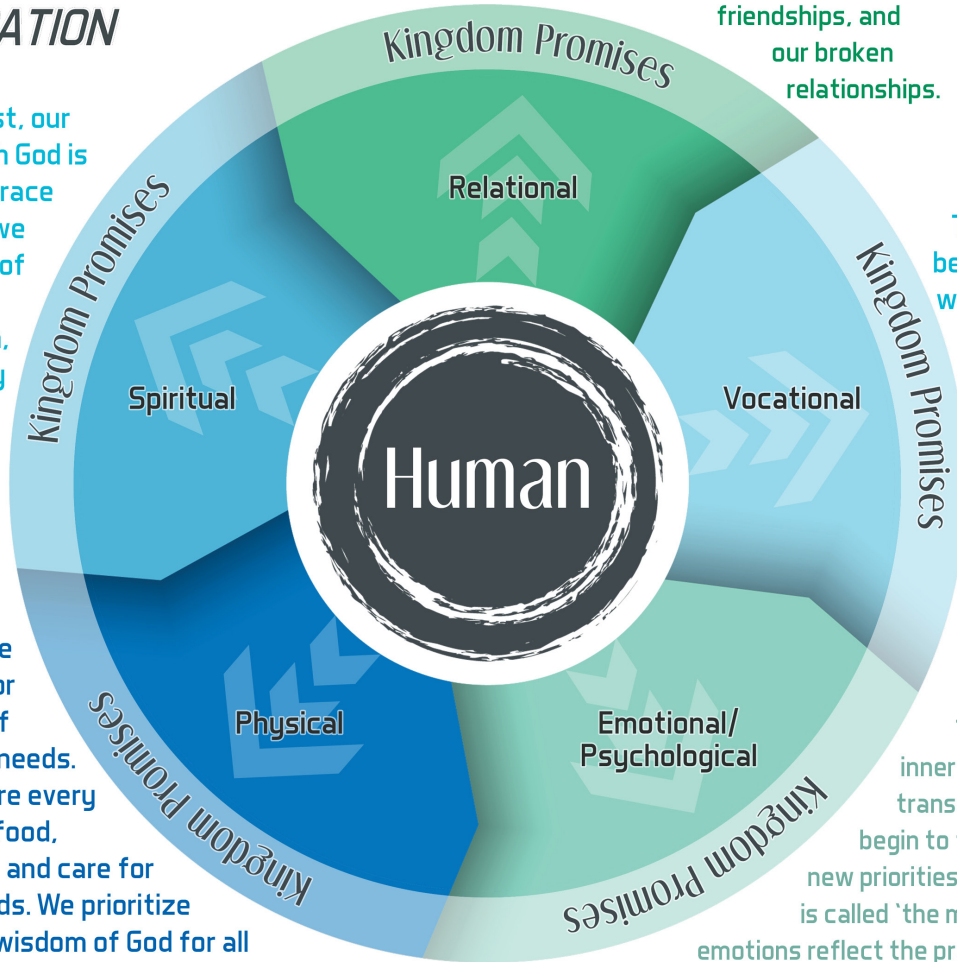
CityStudents & PreK at the Annex • Groups & CityKids+ at the Main Campus



Through Christ, all our human relationships are restored and should become a reflection of the grace and love of Jesus. We begin to pursue the restoration of our family relationships, our friendships, and our broken relationships.

Through Christ, our relationship with God is reconciled. By grace through faith, we become children of God who have forgiveness of sin, the indwelling Holy Spirit, and eternal life.

Through Christ, we begin to serve and advocate for the meeting of people's physical needs. We strive to ensure every person has food, clothing, shelter, and care for their health needs. We prioritize the values and wisdom of God for all issues which relate to the human body.



Through Christ, we begin to do & view our work through the lens of God's redeeming work in creation. We do our jobs as a contribution to God's good purposes in His world.

Through Christ, our inner self begins to undergo transformation. Our minds begin to think differently with new priorities and godly values (this is called 'the mind of Christ'). Our emotions reflect the presence of God's Spirit within us (this is called 'the fruit of the Spirit').

### Thanksgiving Turkey Collection

Our City Church Deacons will be collecting turkeys to give to those in need during this holiday season. Please bring your turkey to the Main Campus during office hours this week (Monday-Thursday, from 8:30-4:30), during Midweek on Wednesday, or next Sunday before worship. Please do not bring them to the Annex. If you have any questions, please contact the church office at 850-785-6127, email us at [info@citychurchpc.com](mailto:info@citychurchpc.com), or you can connect with Phil Gann or any deacon.

#### Deacons of the Week

Nov. 12-18

**Don Baughn... (850) 630-3699**

**Brandon Luke... (850) 345-5330**

*These men are available for any ministry or prayer needs you may have throughout the week.*

#### FINANCIAL STATEMENT FOR SEPTEMBER 2023

MONTHLY BUDGET: \$67,489  
 EXPENSES: \$63,237  
 TOTAL GIVING: \$58,061

### 2 Ways to Give



IN-PERSON

Titling envelopes are available at the Welcome Desk and Donation Boxes can be found at the entrance of the worship area.



ONLINE OR TEXT-TO-GIVE

Visit [citychurchpc.com](http://citychurchpc.com) and click on the "GIVE" tab at the top of the page OR text your amount to 850-312-7277 and follow the prompts!